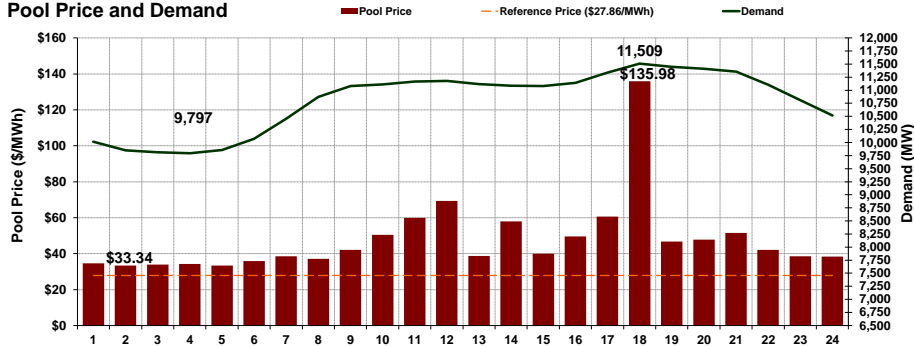


Daily Market Report

Thursday, January 9, 2020

Pool Price and Demand



Pool price averaged \$47.94/MWh, up 11.7% from the previous day's average of \$42.94/MWh. During the day the pool price ranged from \$33.34/MWh to \$135.98/MWh. The peak load was 11,509 MW, observed in HE 18. Pool price during peak demand was \$135.98/MWh.

Pool Price (\$/MWh)	Today	Same Day Last Week	30 Day Roll	YTD
Average	\$47.94	\$32.92	\$41.45	\$40.16
On Peak	\$54.27	\$35.20	\$45.84	\$44.20
Off Peak	\$35.28	\$28.35	\$32.68	\$32.09
Maximum	\$135.98	\$38.80	\$415.49	\$415.49
Minimum	\$33.34	\$28.02	\$25.00	\$25.00

SMP (\$/MWh)	Today	Same Day Last Week	30 Day Roll	YTD
Maximum	\$224.35	\$41.77	\$924.14	\$924.14
Minimum	\$30.96	\$28.01	\$24.55	\$24.55

Demand (All, MW)	Today	Same Day Last Week	30 Day Roll	YTD
Average	10,800	10,309	10,379	10,387
On Peak	11,176	10,681	10,689	10,720
Off Peak	10,047	9,565	9,759	9,721
Maximum	11,509	11,180	11,509	11,509
Minimum	9,797	9,361	9,195	9,195
Load Factor (%)	94%	92%	90%	90%

Coal Availability Factor (AC/MC, %)	Today	Same Day Last Week	30 Day Roll	YTD
Average	83.6%	85.0%	80.2%	81.1%
Maximum	84.8%	85.2%		
Minimum	81.2%	83.2%		

Gas & Other Availability Factor (AC/MC, %)	Today	Same Day Last Week	30 Day Roll	YTD
Average	80.7%	79.9%	79.6%	72.5%
Maximum	84.1%	81.5%		
Minimum	78.3%	78.8%		

Hydro Availability Factor (AC/MC, %)	Today	Same Day Last Week	30 Day Roll	YTD
Average	79.4%	79.4%	79.1%	80.5%
Maximum	80.3%	79.8%		
Minimum	79.2%	78.9%		

Wind Capacity Factor (Gen./MCR, %)	Today	Same Day Last Week	30 Day Roll	YTD
Average	14.0%	54.7%	42.8%	46.7%
Maximum	35.6%	79.3%		
Minimum	0.1%	24.3%		

Transmission Must Run (Average Hourly MW)	Today	Same Day Last Week	30 Day Roll	YTD
Average	0	0	2	0
Maximum	0	0		
Minimum	0	0		

Dispatch Down Service (Average Hourly MW)	Today	Same Day Last Week	30 Day Roll	YTD
Average	0	0	1	0
Maximum	0	0		
Minimum	0	0		

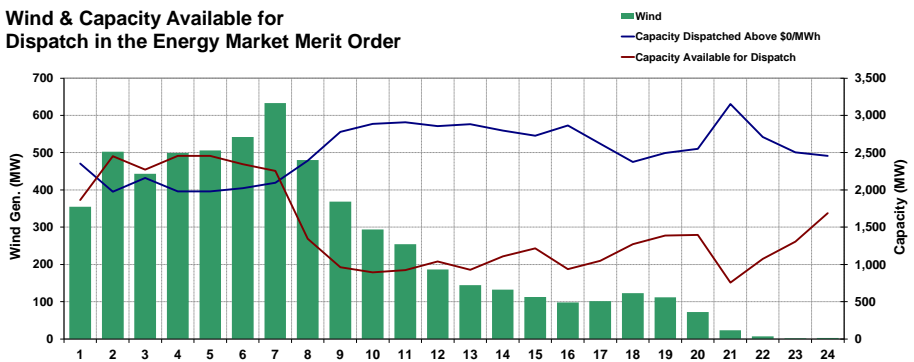
BC Intertie (Average Hourly MW)	Today	Same Day Last Week	30 Day Roll	YTD
On Peak	-315	-61	-129	-162
Off Peak	-94	-13	-4	-36

SK Intertie (Average Hourly MW)	Today	Same Day Last Week	30 Day Roll	YTD
On Peak	-119	-34	-38	-44
Off Peak	-22	0	-8	-5

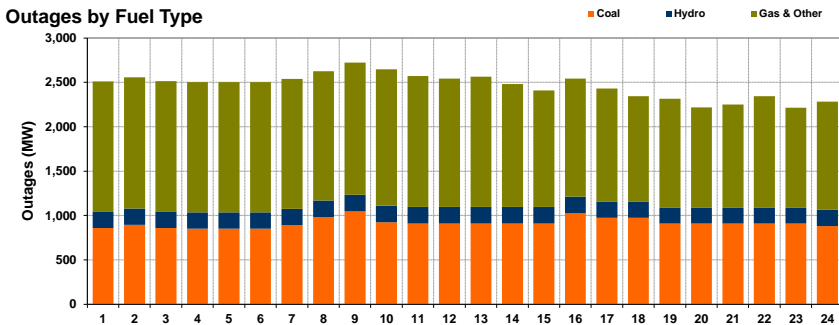
MATL Intertie (Average Hourly MW)	Today	Same Day Last Week	30 Day Roll	YTD
On Peak	-135	-65	-88	-106
Off Peak	-141	-124	-97	-128

Notes & Disclaimers
On peak hours for the purposes of this report are defined as HE 8 through 23, Monday through Sunday. Off peak hours are all other periods. Outages are defined as the Maximum Capacity (MC) minus the Available Capacity (AC). The information, including prices, posted on this page is subject to the AESO's legal notice on our website.

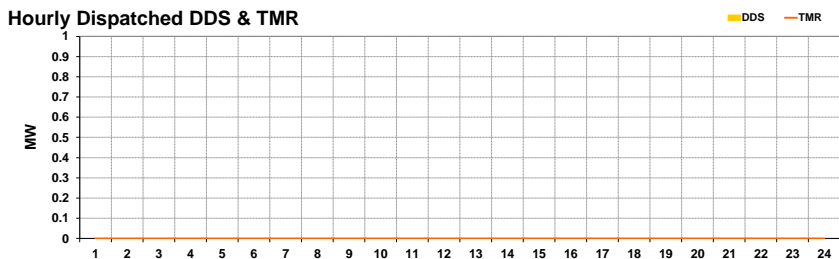
Wind & Capacity Available for Dispatch in the Energy Market Merit Order



Outages by Fuel Type



Hourly Dispatched DDS & TMR



Imports and Exports

